



Harper Adams
University

Crime Prevention as part of the Business Plan for rural start-ups

Miss Kreseda Smith

Postgraduate Researcher

Harper Adams University

Tackling Farm Crime: farmer behaviour and crime prevention decision making

E: farmcrime@harper-adams.ac.uk

@FarmCrimePhD

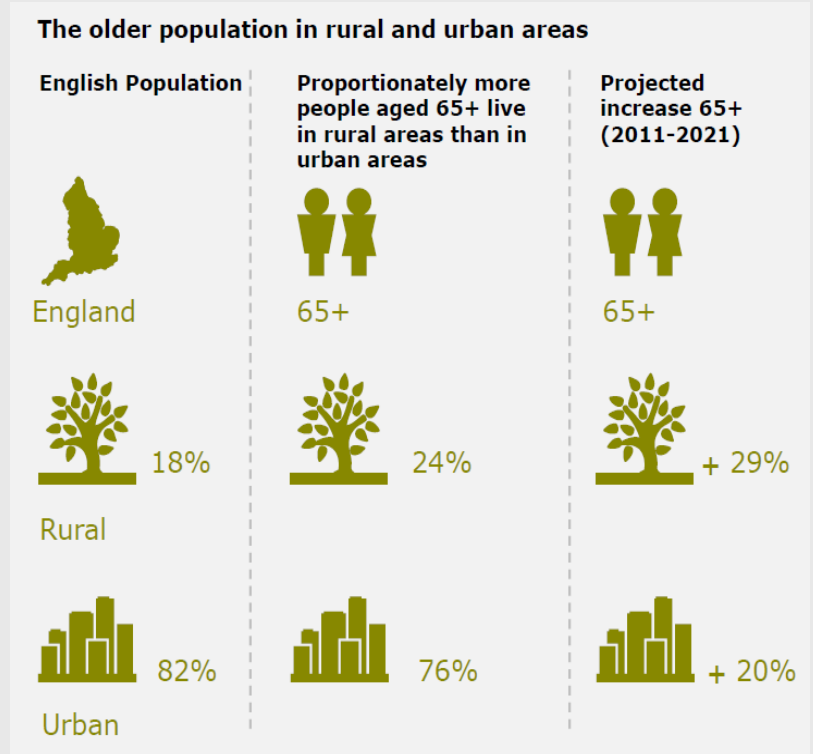
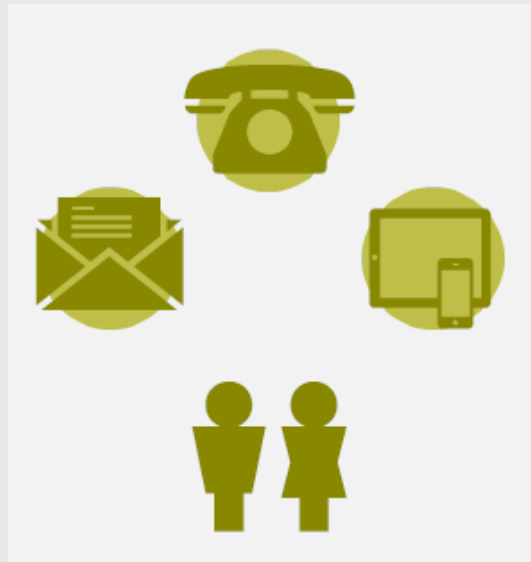
Rural Entrepreneurship

An Entrepreneur is “a person who organises and manages a business undertaking, assuming the risk for the sake of profit”

US Small Businesses Administration



Rural Business Challenges



Rural Start-Ups



Geographic
Isolation

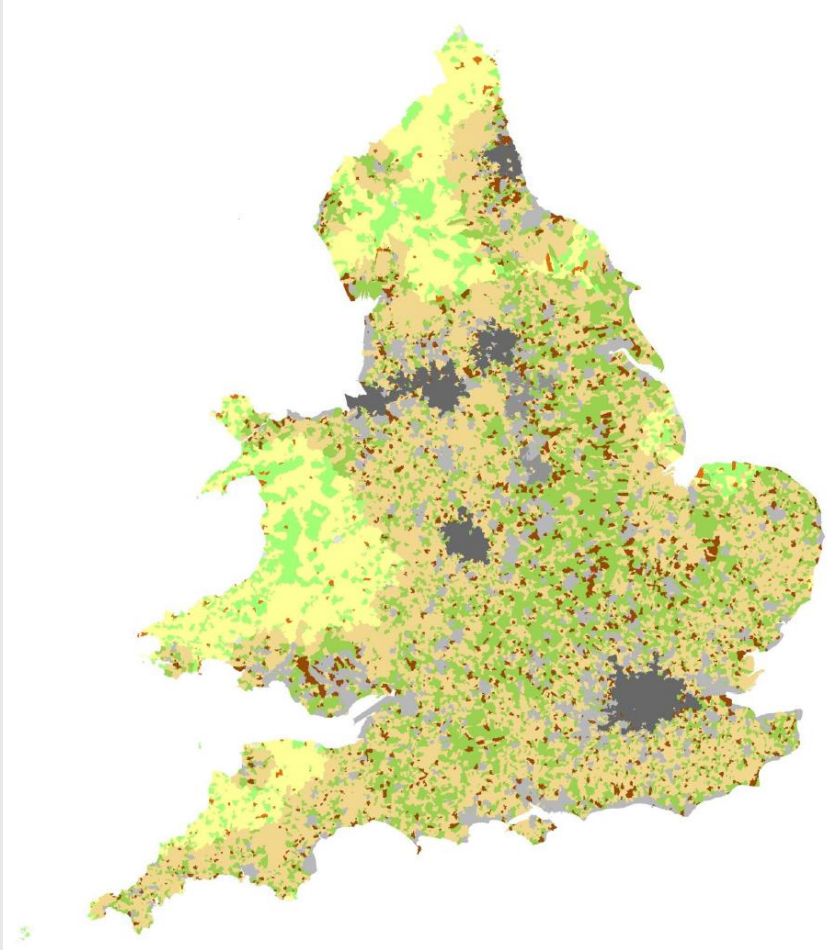


Size of Rural small
businesses



Dependency on urban
links

Why is crime prevention important?



Business Resilience



Government Business Plan Advice



[Home](#) > [Business and self-employed](#) > [Setting up](#)

Write a business plan



The Banks & The Prince's Trust



Independent Financial Advisors

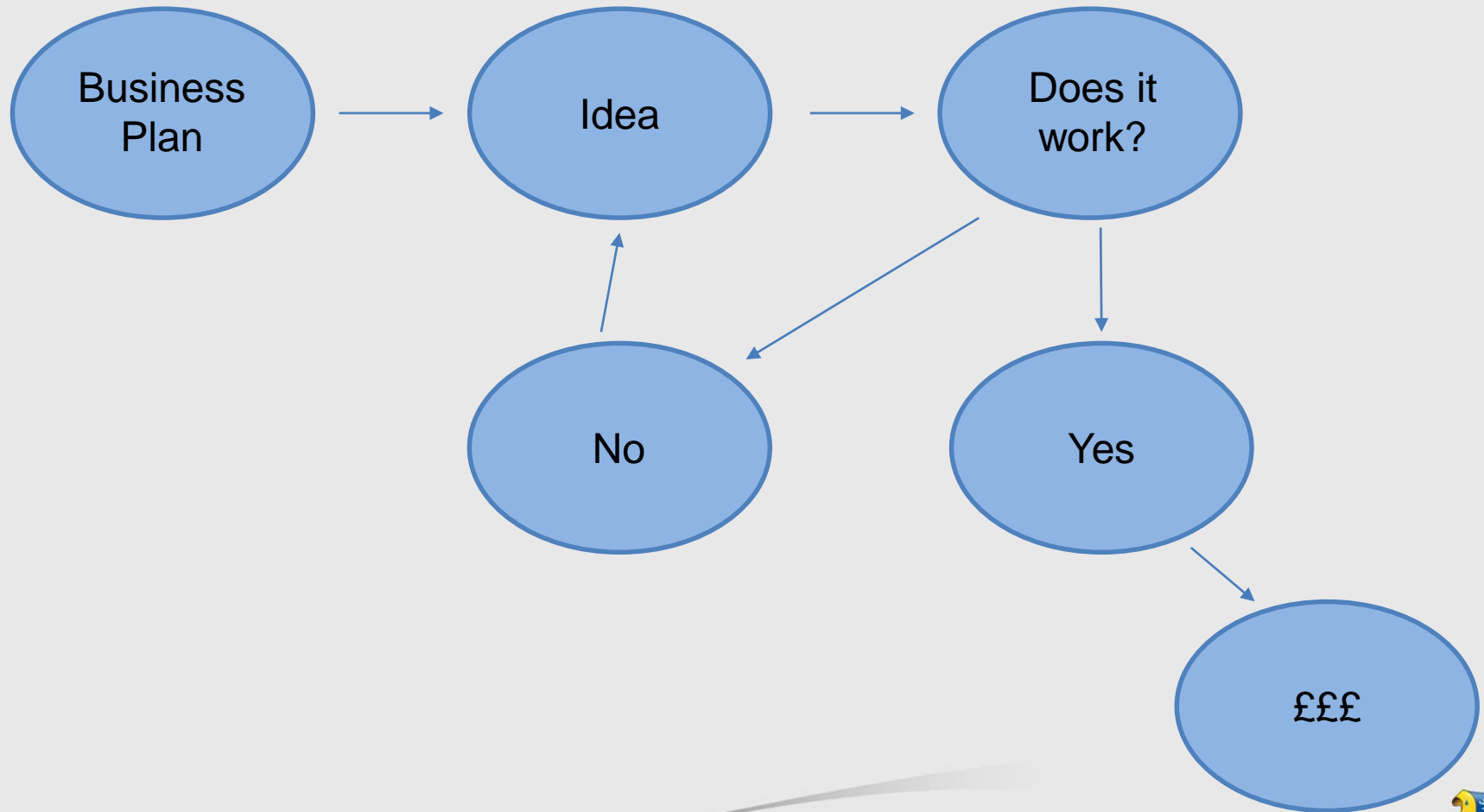


Rural businesses are smaller



Windy Arbour Farm Shop, Lancashire

It's not just for finance



It's always changing



Rural Business Networks



Conclusions



- Ensure risk assessment & contingency planning are mandatory for Business Plans

- Financers and insurers provide guidance on adequately considering & managing risks



Conclusions



- Business Plans should not solely be seen as a road to funding

- Creation of local rural business networks to mentor rural start-ups





Thank you for time

Any questions?