

HARPER ADAMS UNIVERSITY

FUTURE FARM

SHROPSHIRE



SEND pack

Welcome to Open Farm Sunday at Harper Adams University!

We are delighted to welcome you to Open Farm Sunday at Harper Adams University. This event is designed to give families and visitors the opportunity to explore farming, food and the countryside in a safe, welcoming and supportive environment.

We are committed to making Open Farm Sunday as accessible and inclusive as possible for children, young people and adults with Special Educational Needs and Disabilities (SEND). This information pack has been created to help you plan your visit with confidence and understand what to expect on the day.

If you have any additional needs or questions, our team will be very happy to help on the day, or please email gmlburn@harper-adams.ac.uk in advance of the event. We look forward to welcoming you.

Some key information that you may need in preparation for or on the day itself:

- The walk around the farm is approximately 1.1km
- Staff will be on site to talk about what we do and why, alongside demonstrations and activities.
- There is no timetable for the day, instead we find it easier and less crowded to let people explore at their own speed.
- We have included some photos of the buildings along with a map, in this pack, to show you what to expect. Some additional features will be present on the day and the SEND pack will be updated with more relevant photos for 2027.
- The farm is predominantly tarmacked, with the exception of one walkway to the catering area. There is an alternative route that allows you to bypass this walkway. Please speak to a member of staff for assistance.
- There are drainage channels across the farm, which will have covers to assist with wheelchair users.
- The viewing gallery in the parlour is accessible via a lift.
- To comply with Martin's Law, we will ask all visitor to have bags checked at the entrance.
- No dogs are permitted entry, except assistance dogs.

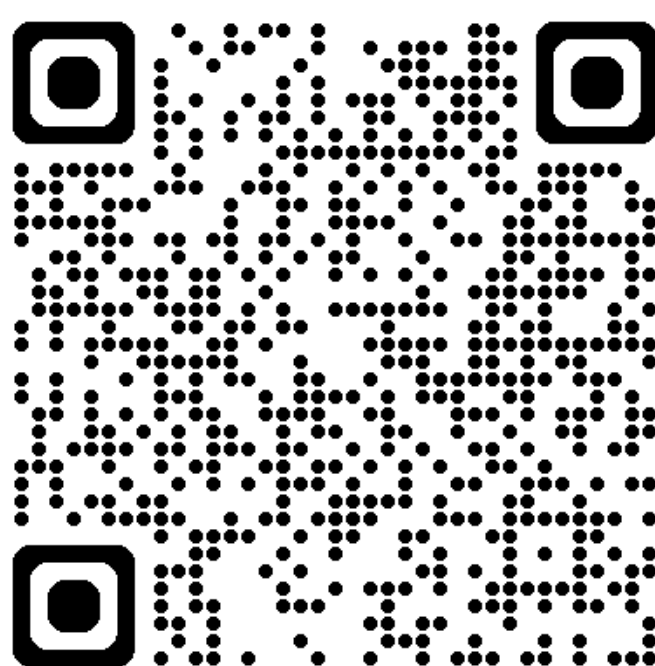
Disabled toilets are available on site, but unfortunately there are no hoist facilities. The nearest facilities with a hoist can be found at the following address:

Lakewood Wellbeing (Facility 2)
Severn Drive
Wellington
Telford
Shropshire
TF1 3JR

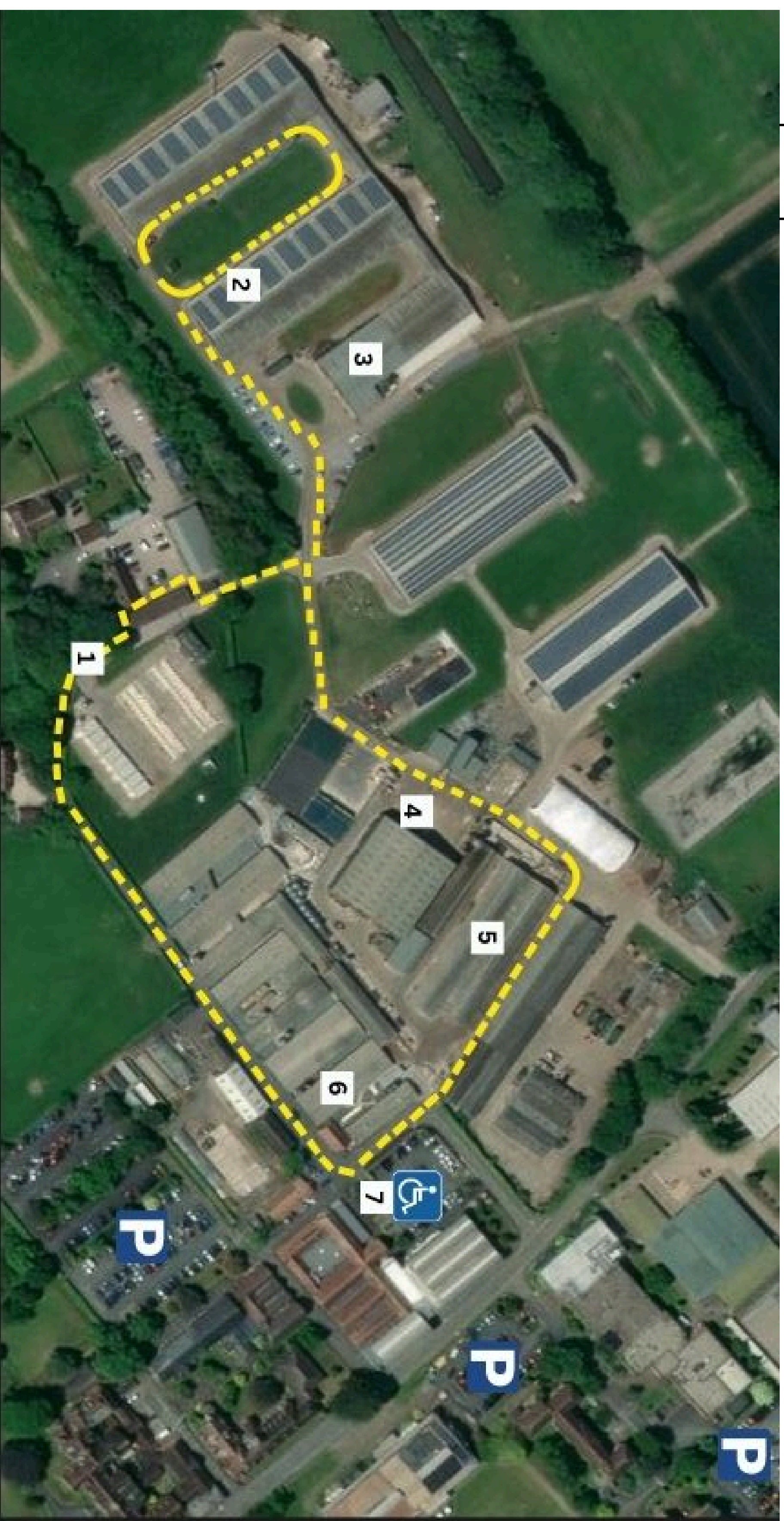
As with all visitors, we ask you to follow all H&S requirements, along with washing hands and not touching the animals.

More information about the event can be found by scanning the QR code below or visiting our website directly

<https://www.futurefarm.zone/1099/open-farm-sunday/>



Farm photo plan



1. Entrance
2. Dairy
3. Parlour
4. Crop and Ops
5. Beef Unit
6. Pig Unit
7. Disabled Parking

1. Entrance



2. Dairy Unit



3. Parlour



4. Crops and Ops



5. Beef Unit



6. Pig Unit



7. Disabled Car Park

