

HARPER ADAMS UNIVERSITY

FUTURE FARM

SHROPSHIRE

IN THIS ISSUE:

Upcoming industry events and local news

Details of some of the upcoming industry events happening in March 2026 and the latest local news.

An insight into the performance of the farm animals

A visual representation of the performance of our animals and how our farm compares.

Industry news

The top news stories in February 2026 that are relevant to Future Farm.

Did you know...

Our monthly section of general farming facts.

Thank you, and Feedback

A brief thank you to our readers and details on where you can give feedback.

Don't forget to check out our website for more information on the farm at

<https://futurefarm.zone/>

Industry Events

Upcoming industry events in March 2026

- [Borderway UK Dairy Expo](#) – 13–14 March 2026 @ Borderway Mart – Carlisle
- [Andersons Seminar: Prospects for UK Agriculture](#) – 12 March 2026 @ Harper Adams University – Newport, Shropshire
- [Cotswolds Regenerative Agriculture Conference](#) – 19 March 2026 @ Royal Agricultural University – Cirencester
- [International Conference on Agroecology and Sustainable Farming Practices](#) – 26 March 2026 @ Liverpool

💡 **Tip:** Want to know more? Just click the event names — they're linked!



Local News

Launch of FarmMetrics

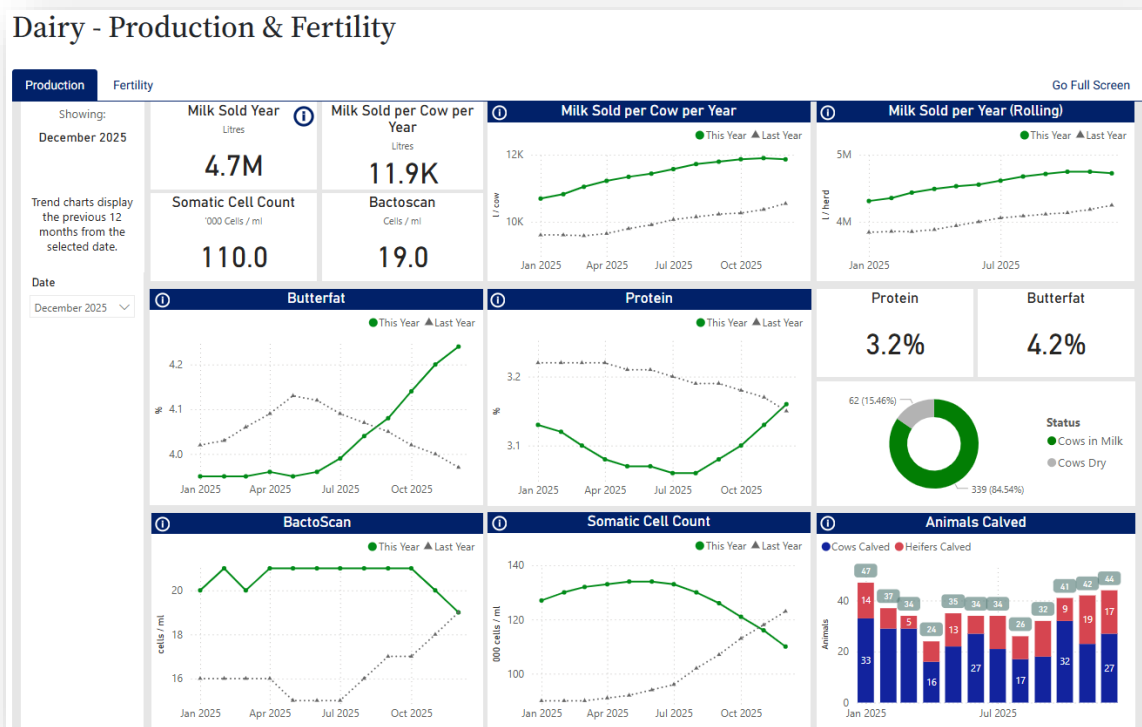
Future Farm is pleased to announce the launch of the new FarmMetrics platform, a digital portal designed to bring together key data and insights from across the university farm. The platform provides a central place for staff and students to explore Farm data on performance, sustainability metrics, livestock and cropping data, and other operational figures that help demonstrate how the farm is managed.

FarmMetrics has been developed to make farm data more accessible and easier to understand. By presenting information in a clear and visual format, the platform supports teaching, research, and day-to-day decision-making on the farm. It also provides a useful resource for students who want to utilise real, up-to-date farm data for their projects.

Access to the platform will be shared with staff and students. The username and password will be distributed via Viva Engage and will also be available on the university intranet.

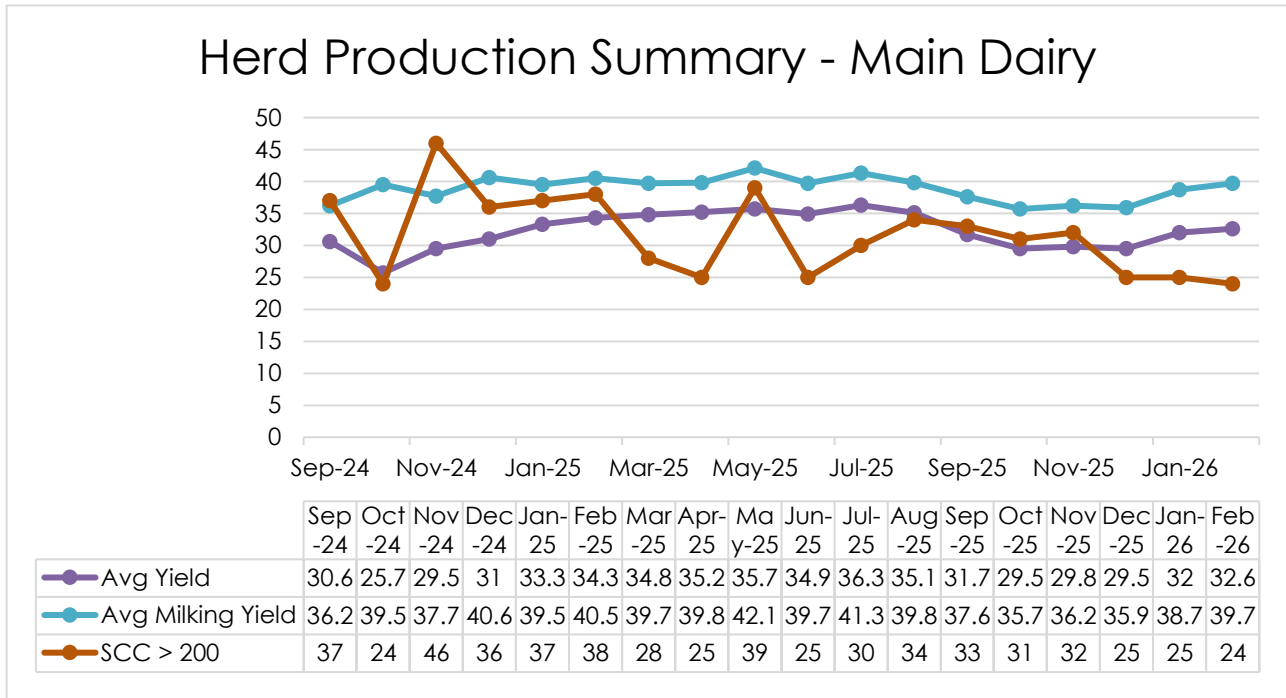
Anyone who would like access or who has not received the login details can get in touch with Steffan Newell at snewell@harper-adams.ac.uk.

We encourage staff and students to explore the platform and see how FarmMetrics brings together the data that underpins the work of Future Farm.



Future Farm Animal Performance in February 2026:

The Main Dairy milk yield and KPI's in comparison to all NMR recorded herds of a similar herd size (Please note, the data in the graph and screenshot of the KPI table are from Herd Companion)



Benchmark	New	Export
NMR14: Holstein herds > 300 cows	Benchmarks	Export

Drag a column header here to group by that column

KPIs	Worst' <-----> 'Best'	Worst	You	Best	Mean
Milk/Cow/Year of life	<div style="width: 80%;"></div>	4,094	7,320	9,128	6,258
Milk/Cow/Year	<div style="width: 85%;"></div>	6,812	12,217	13,847	10,068
Lactation Yield	<div style="width: 80%;"></div>	6,707	11,180	13,370	9,837
305 Day yield	<div style="width: 80%;"></div>	6,520	10,997	11,703	8,897
Protein/Cow/Year	<div style="width: 70%;"></div>	232	386	458	347
Fat/Cow/Year	<div style="width: 75%;"></div>	290	476	718	433
Ave. Protein %	<div style="width: 10%;"></div>	3.14	3.16	3.82	3.46
Ave. Fat %	<div style="width: 15%;"></div>	3.68	3.89	5.50	4.30
Mean Parity	<div style="width: 80%;"></div>	1.99	2.64	3.76	2.78
Calv. Interval < 385 %	<div style="width: 10%;"></div>	29.17	37.76	74.81	58.11
Ave. Lactation length	<div style="width: 80%;"></div>	376	287	246	313
Ave. SCC	<div style="width: 90%;"></div>	319	108	78	158
% Cows in Parity 1	<div style="width: 80%;"></div>	42.75	31.79	12.99	29.02
Age 1st Calving	<div style="width: 90%;"></div>	1,020	709	699	784
Ave. Calving Interval	<div style="width: 80%;"></div>	446	414	368	392
Ave. Dry days	<div style="width: 80%;"></div>	85	64	34	55
Culling + Death %	<div style="width: 80%;"></div>	72	35	3	31
Ave. No. Cows	<div style="width: 10%;"></div>	124	399	1,229	487

[Create Filter](#)

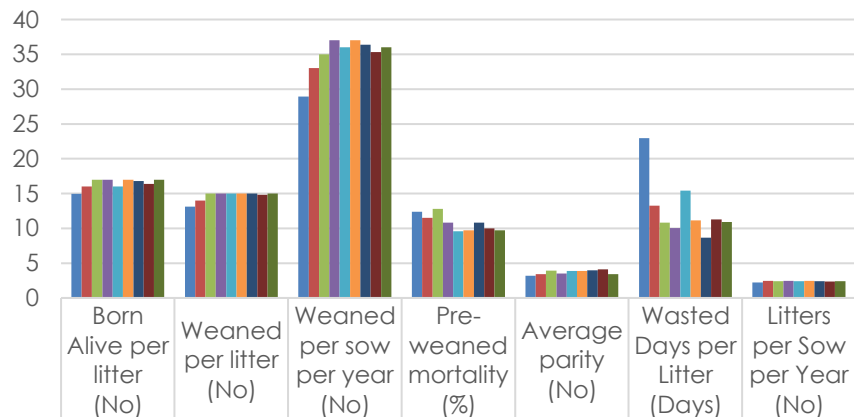
The Main dairy milk quality components compared to the Benchmark Müller average.

February 2026

	Main Dairy	Muller Average
Avg Bfat (%)	4.18	4.42
Avg Protein (%)	3.41	3.47
Avg SCC ('000/ml)	85	136
Avg BAC ('000/ml)	18	23.48
Therms (cfu/ml)	200	443.2
FPD (m*C)	522	-

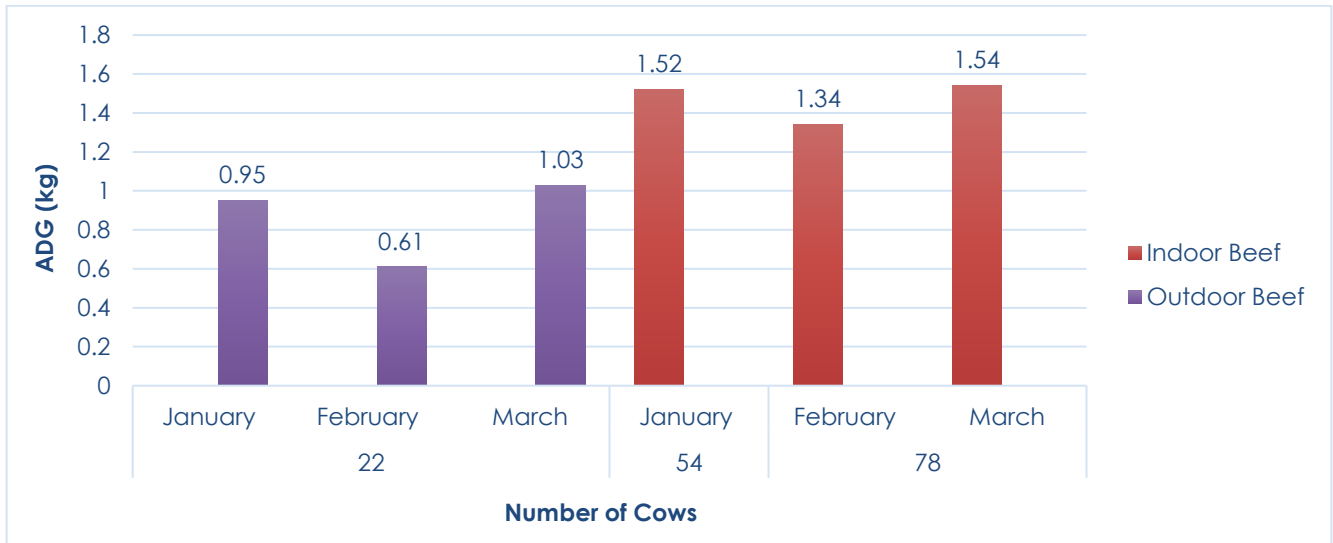
The quarterly Pig unit production performance in comparison to the AgroVision Benchmark average (Please note that the AgroVision Benchmark figures are produced quarterly; for this performance comparison, the September 2025 figures have been used).

Quarterly pig unit performance vs. Agrovision benchmark



	Born Alive per litter (No)	Weaned per litter (No)	Weaned per sow per year (No)	Pre-weaned mortality (%)	Average parity (No)	Wasted Days per Litter (Days)	Litters per Sow per Year (No)
■ AgroVision Avg. (September 2025)	14.94	13.1	28.95	12.38	3.21	22.94	2.21
■ HAU pig unit (Q1 2024)	16	14	33	11.5	3.4	13.3	2.44
■ HAU pig unit (Q2 2024)	17	15	35	12.8	3.9	10.8	2.4
■ HAU pig unit (Q3 2024)	17	15	37	10.8	3.5	10.0	2.5
■ HAU pig unit (Q4 2024)	16	15	36	9.6	3.9	15.4	2.4
■ HAU pig unit (Q1 2025)	17	15	37	9.7	3.9	11.1	2.4
■ HAU pig unit (Q2 2025)	16.8	15	36.4	10.8	3.95	8.68	2.4
■ HAU pig unit (Q3 2025)	16.4	14.8	35.3	10	4.1	11.3	2.38
■ HAU pig unit (Q4 2025)	17	15	36	9.7	3.41	10.92	2.42

Indoor & Outdoor Beef Systems Average Daily Weight Gain (kg).



Industry News

1. Supermarket Commits £1.6bn to British Farming – 19 February 2026

Supermarket chain Morrisons has announced a £1.6 billion commitment to support more than 2,500 UK farmers supplying produce, meat, dairy, fish, and eggs. The long-term investment aims to strengthen supply chains, provide greater financial stability for farmers, and support future generations entering the agricultural sector through training and collaboration initiatives.

[Read more](#)

2. Government Announces Changes to Farming Support Schemes – 24 February 2026

The UK government confirmed updates to key agricultural support schemes, including changes to the Sustainable Farming Incentive (SFI), a new round of the Farming Equipment and Technology Fund, and an expanded budget for Capital Grants. The changes are intended to improve productivity, encourage environmental management, and support farmers as the sector continues its transition away from EU-era subsidy systems.

[Read more](#)

3. Exceptionally Wet Weather Raises Concerns for UK Farmers – 09 February

Farmers across parts of the UK have warned that persistent winter rainfall could damage crops and disrupt farming operations. Some regions experienced rain every day since the start of the year, leading to waterlogged fields and fears that crops may rot in the ground. The extreme weather has increased costs as livestock are kept indoors for longer and has renewed calls for improved water management planning.

[Read more](#)

Did You Know...

Lambing Facts!

- ❖ Ewes typically give birth to one to three lambs per pregnancy, with twins being the most common.
- ❖ The average gestation period for a ewe is around 145–150 days.
- ❖ Lambs can usually stand and walk within an hour of birth.
- ❖ Lambing season usually peaks in spring, taking advantage of warmer weather and fresh pasture.
- ❖ Some breeds are more prolific than others; for example, the Finnsheep can have large litters of four or more lambs.
- ❖ Lambing difficulties, known as dystocia, are more common in older ewes or those carrying multiple lambs.
- ❖ Lambs' ears and tails can help farmers quickly determine their age and health status.
- ❖ Proper lambing supervision and hygiene can drastically reduce lamb mortality.



Thank you for reading the Future Farm monthly update newsletter. If you have any feedback or would like to see something in upcoming updates, please send your request to futurefarmenquiries@harper-adams.ac.uk.

We apologise to anyone who made a suggestion for the newsletter, and the content you requested was not included. We are doing our best to gather this information about the farm and our practices. Check out our newly updated website:

<https://futurefarm.zone/>.

Stay tuned for more updates from the farm in next month's issue!

