

HARPER ADAMS UNIVERSITY

FUTURE FARM

SHROPSHIRE

IN THIS ISSUE:

Upcoming industry events and local news

Details of some of the upcoming industry events happening in December 2025 and the latest local news.

An insight into the performance of the farm animals

A visual representation of the performance of our animals and how our farm compares.

Industry news

The top news stories in November 2025 that are relevant to Future Farm.

Did you know...

Our monthly section of general farming facts.

Thank you, and Feedback

A brief thank you to our readers and details on where you can give feedback.

Don't forget to check out our website for more information on the farm at

<https://futurefarm.zone/>

Local News

Harper Adams Pig Unit Wins Triple at National Pig Awards

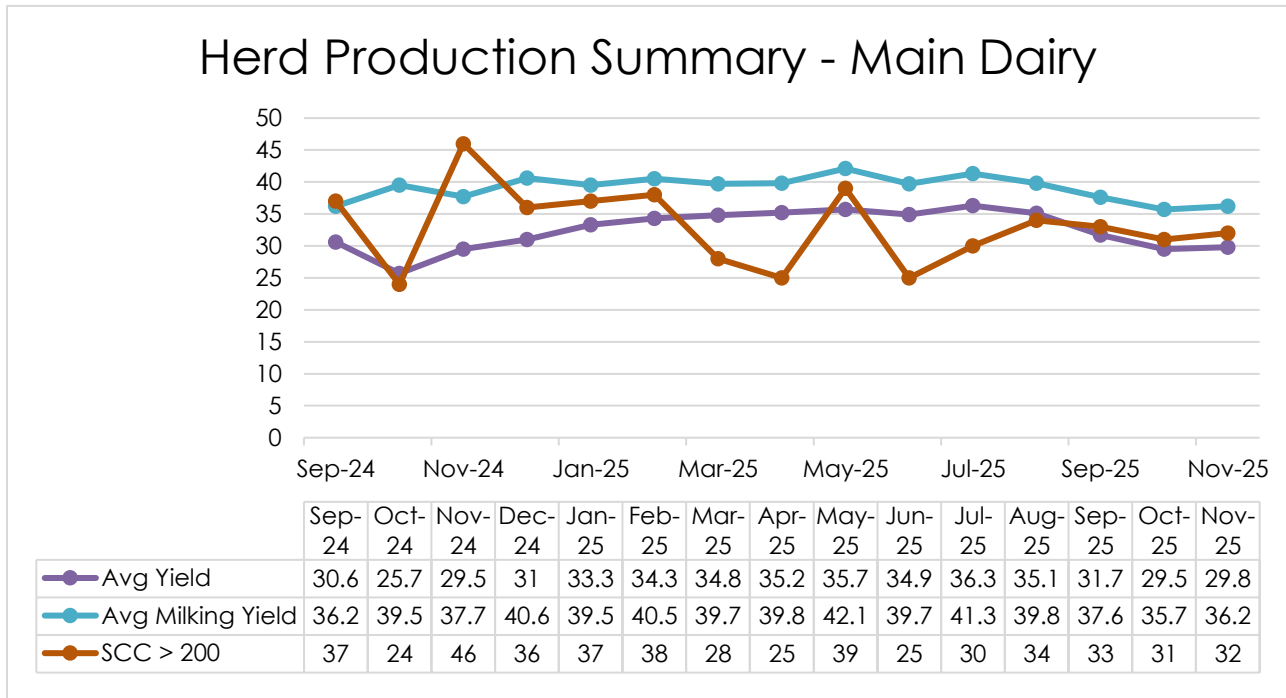
The Harper Adams Indoor Pig Unit has had a fantastic showing at this year's National Pig Awards, taking home three top honours: Unit Manager of the Year, Herd Productivity Award, and Indoor Producer of the Year.

These awards recognise the team's dedication to excellent management, animal welfare, and high herd performance. A huge congratulations to everyone involved for this outstanding achievement!



Future Farm Animal Performance in November 2025:

The Main Dairy milk yield and KPI's in comparison to all NMR recorded herds of a similar herd size (Please note, the data in the graph and screenshot of the KPI table are from Herd Companion)



Benchmark	New	Export
NMR14: Holstein herds > 300 cows	Benchmarks	Export

Drag a column header here to group by that column

KPIs	'Worst' <-----> 'Best'	Worst	You	Best
Milk/Cow/Year of life	<div style="width: 90%;"></div>	4,094	7,544	9,388
Milk/Cow/Year	<div style="width: 85%;"></div>	6,775	12,251	13,310
Lactation Yield	<div style="width: 80%;"></div>	6,856	11,386	12,995
305 Day yield	<div style="width: 75%;"></div>	6,288	11,153	11,713
Protein/Cow/Year	<div style="width: 10%;"></div>	232	377	438
Fat/Cow/Year	<div style="width: 15%;"></div>	290	469	730
Ave. Protein %	<div style="width: 5%;"></div>	3.12	3.08	3.83
Ave. Fat %	<div style="width: 10%;"></div>	3.68	3.83	5.67
Mean Parity	<div style="width: 10%;"></div>	1.99	2.70	3.76
Calv. Interval < 385 %	<div style="width: 15%;"></div>	29.17	39.34	72.76
Ave. Lactation length	<div style="width: 10%;"></div>	368	293	247
Ave. SCC	<div style="width: 10%;"></div>	312	119	70
% Cows in Parity 1	<div style="width: 15%;"></div>	46.64	29.72	12.26
Age 1st Calving	<div style="width: 10%;"></div>	1,018	709	694
Ave. Calving interval	<div style="width: 10%;"></div>	454	414	369
Ave. Dry days	<div style="width: 10%;"></div>	82	65	34
Culling + Death %	<div style="width: 10%;"></div>	71	31	16
Ave. No. Cows	<div style="width: 10%;"></div>	179	402	1,229

[Create Filter](#)

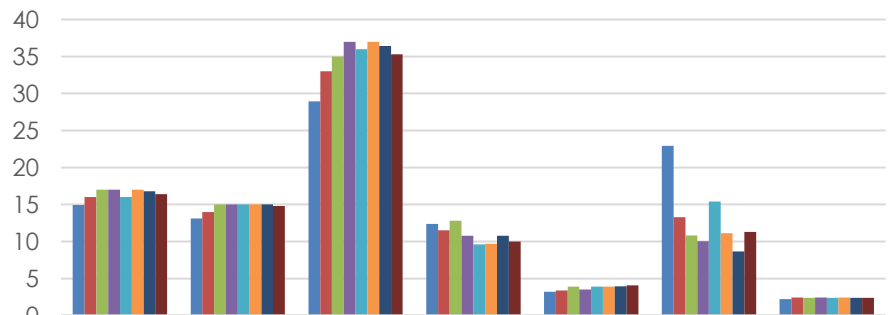
The Main dairy milk quality components compared to the Benchmark Müller average.

November 2025

	Main Dairy	Muller Average
Avg Bfat (%)	4.52	4.42
Avg Protein (%)	3.45	3.56
Avg SCC ('000/ml)	101	143
Avg BAC ('000/ml)	16	25.62
Therms (cfu/ml)	310	903.1
FPD (m°C)	520	-

The quarterly Pig unit production performance in comparison to the AgroVision Benchmark average (Please note that the AgroVision Benchmark figures are produced quarterly; for this performance comparison, the September 2025 figures have been used).

Quarterly pig unit performance vs. Agrovision benchmark



	Born Alive per litter (No)	Weaned per litter (No)	Weaned per sow per year (No)	Pre-weaned mortality (%)	Average parity (No)	Wasted Days per Litter (Days)	Litters per Sow per Year (No)
■ AgroVision Avg. (September 2025)	14.94	13.1	28.95	12.38	3.21	22.94	2.21
■ HAU pig unit (Q1 2024)	16	14	33	11.5	3.4	13.3	2.44
■ HAU pig unit (Q2 2024)	17	15	35	12.8	3.9	10.8	2.4
■ HAU pig unit (Q3 2024)	17	15	37	10.8	3.5	10.0	2.5
■ HAU pig unit (Q4 2024)	16	15	36	9.6	3.9	15.4	2.4
■ HAU pig unit (Q1 2025)	17	15	37	9.7	3.9	11.1	2.4
■ HAU pig unit (Q2 2025)	16.8	15	36.4	10.8	3.95	8.68	2.4
■ HAU pig unit (Q3 2025)	16.4	14.8	35.3	10	4.1	11.3	2.38

Industry News

1. Rising Interest in Farm Diversification Among UK Farmers – 12 November 2025

New data released on 12th November 2025 shows over 71% of farming businesses in England now have some form of diversification in addition to core farming activities (for example, tourism, renewable energy, or other enterprises). The shift shows growing reliance on non-farming income streams to buffer against volatility in markets, weather, and subsidies.

[Read more](#)

2. AHDB Predicts Strong 2026 Beef Market – 14 November 2025

AHDB's November outlook reported tightening beef supplies heading into early 2026, driven by lower domestic cattle numbers and rising global demand. The analysis suggests farm-gate prices are likely to remain firm, with retailers preparing for higher procurement costs.

[Read more](#)

3. Dairy Sector Sees Improved Margins – 20 November 2025

Industry data published on 20 November indicated that improving milk prices, combined with easing feed costs, have contributed to better margins for many UK dairy producers. However, processors noted that profitability remains highly sensitive to global dairy commodity movements.

[Read more](#)

4. New Soil Health Framework Launched for English Farmers – 25 November 2025

DEFRA introduced an updated national Soil Health Framework guiding monitoring of soil structure, biology, and organic matter. The new framework supports future ELMs standards and encourages farmers to adopt more regenerative, resilience-focused land-management practices.

[Read more](#)

Did You Know...

Earthworms can boost crop yields by up to 25%

Their burrowing improves soil structure, drainage, and nutrient cycling, effectively acting as tiny, free farm workers.

UK agriculture manages over 70% of the nation's land area

Meaning farmers play a major role not only in food production but in shaping biodiversity, carbon storage, and landscape resilience.

Grasslands store more carbon than forests in many parts of the UK

Well-managed pasture can lock carbon deep in the soil, making livestock systems part of long-term climate solutions when done sustainably.

Modern GPS-guided tractors can reduce fuel use by up to 20%

Precision steering avoids overlap and saves time, diesel, and money, even on small farms.

A single teaspoon of healthy soil can contain more living organisms than people on Earth

Soil biodiversity is incredibly rich, driving everything from nutrient cycling to disease suppression.

Thank you for reading the Future Farm monthly update newsletter. If you have any feedback or would like to see something in upcoming updates, please send your request to futurefarmenquiries@harper-adams.ac.uk.

We apologise to anyone who made a suggestion for the newsletter, and the content you requested was not included. We are doing our best to gather this information about the farm and our practices. Check out our newly updated website <https://futurefarm.zone/>.

Stay tuned for more updates from the farm in next month's issue!

