

## Windows

File Edit View History Bookmarks Tools Help

eduroam Configuration As... x +

GEANT Association (NL) | <https://cat.eduroam.org>

Most Visited Getting Started Latest Headlines

CAT was recently upgraded to version 1.1.1 Please report any issues to the mailing list [cat-users@geant.net](mailto:cat-users@geant.net)

**Welcome to eduroam CAT**  
eduroam Configuration Assistant Tool

View this page in [Български](#) [Català](#) [Čeština](#) [Deutsch](#) [English\(GB\)](#) [Español](#) [Français](#) [Galego](#) [Hrvatski](#) [Italiano](#) [Norsk](#) [Polski](#) [Slovenščina](#) [Srpski](#) [Suomi](#) [Ελληνικά](#) [Magyar](#) [Português](#) [Slovenčina](#) [Start page](#)

**About eduroam**

- About eduroam
- CAT
- Terms of use
- FAQ
- Report a problem
- Become a CAT developer

eduroam admin: [manage your IDP](#)

eduroam installation made easy:  
**Apple iOS devices**  
iPhone, iPad, iPod touch

Custom built for your home institution

Digitally signed by the organisation that coordinates eduroam: TERENA

**eduroam user:  
download your eduroam installer**

eduroam CAT - Release CAT-1.1.1 © 2011-15 GEANT on behalf of the GN3, GN3plus, GN4 consortia and others [Full Copyright and Licenses](#)

GEANT European Commission Communications Networks, Content and Technology

Browse to <https://cat.eduroam.org> and click on the blue rectangle link labelled 'eduroam user: download your eduroam installer'

File Edit View History Bookmarks Tools Help

eduroam Configuration As... x +

GEANT Association (NL) | <https://cat.eduroam.org>

Most Visited Getting Started Latest Headlines

CAT was recently upgraded to version 1.1.1 Please report any issues to the mailing list [cat-users@geant.net](mailto:cat-users@geant.net)

**Welcome to eduroam CAT**  
eduroam Configuration Assistant Tool

View this page in [Български](#) [Català](#) [Čeština](#) [Deutsch](#) [English\(GB\)](#) [Español](#) [Français](#) [Galego](#) [Hrvatski](#) [Italiano](#) [Norsk](#) [Polski](#) [Slovenščina](#) [Srpski](#) [Suomi](#) [Ελληνικά](#) [Magyar](#) [Português](#) [Slovenčina](#) [Start page](#)

**About eduroam**

- About eduroam
- CAT
- Terms of use
- FAQ
- Report a problem
- Become a CAT developer

eduroam admin: [manage your IDP](#)

eduroam installation made easy:  
**MS Windows**  
10, 8, 7, Vista

Custom built for your home institution

Digitally signed by the organisation that coordinates eduroam: TERENA

**eduroam user:  
download your eduroam installer**

Home institution  
Select your institution

- Harper Adams University  
United Kingdom 3 km
- University of Wolverhampton  
United Kingdom 27 km
- Sandwell College  
United Kingdom 40 km
- University of Derby  
United Kingdom 43 km
- The Open University  
United Kingdom 47 km
- University of Birmingham  
United Kingdom 48 km
- Glyndwr University  
United Kingdom 51 km
- University of Worcester  
United Kingdom 66 km

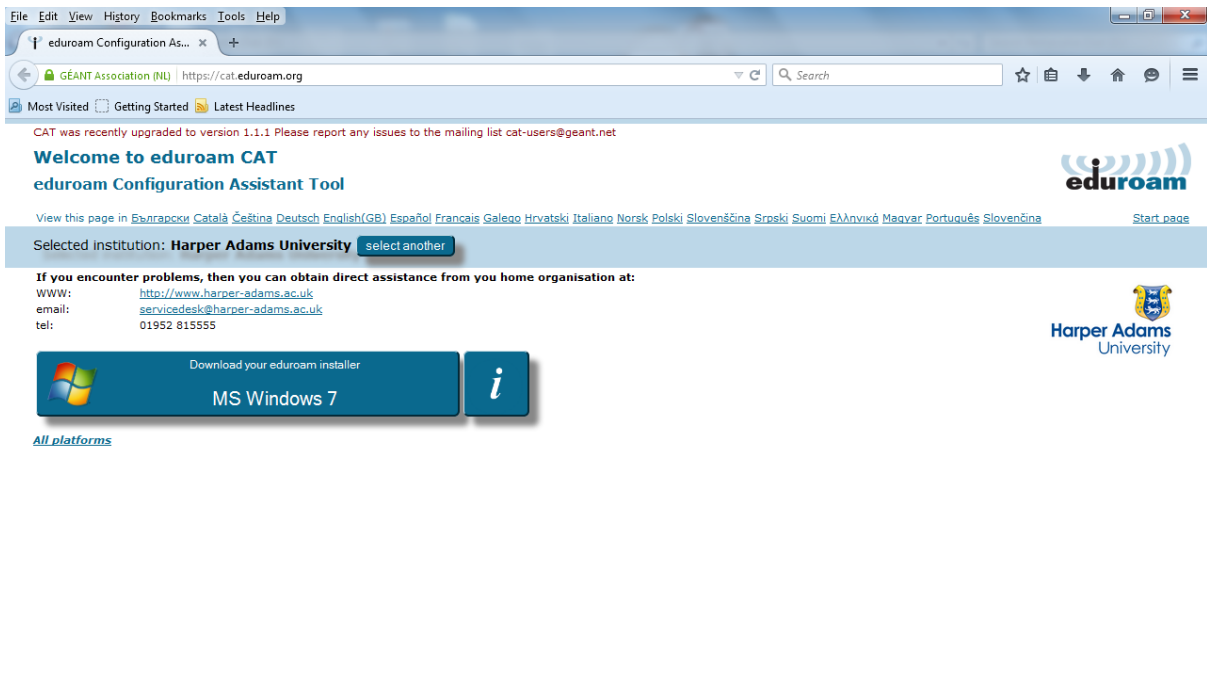
br search for an institution, in example University of Oslo

Help, my institution is not on the list

eduroam CAT - Release CAT-1.1.1 © 2011-15 GEANT on behalf of the GN3, GN3plus, GN4 consortia and others [Full Copyright and Licenses](#)

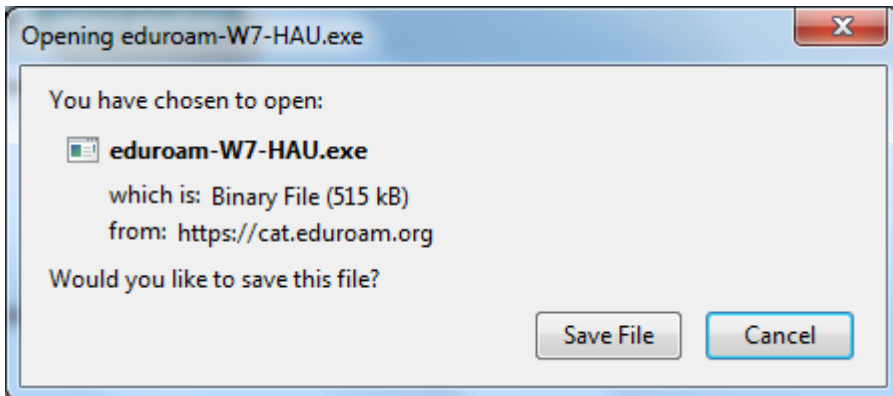
Within the 'Select your institution' menu search for Harper Adams University, when complete the Harper Adams University option will be displayed within the menu.

Click on 'Harper Adams University'

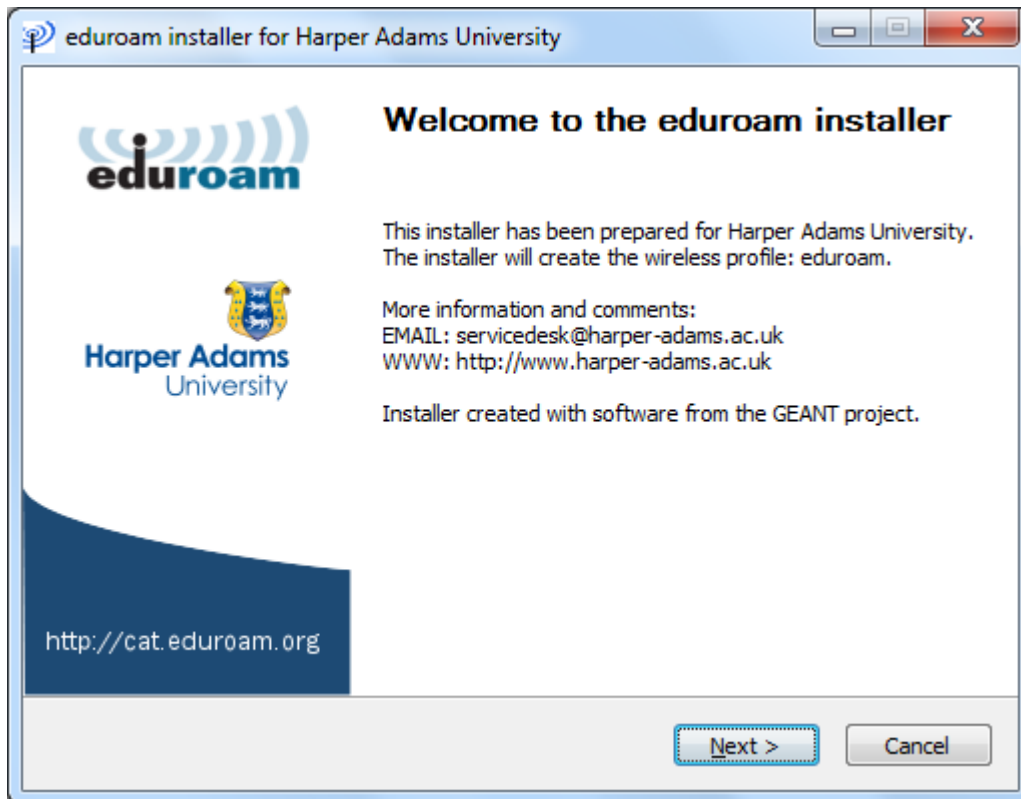


The eduroam CAT webpage will automatically detect the Windows client version and display a download link for that version within a blue box.

Click on the blue box that labels the client Windows version.

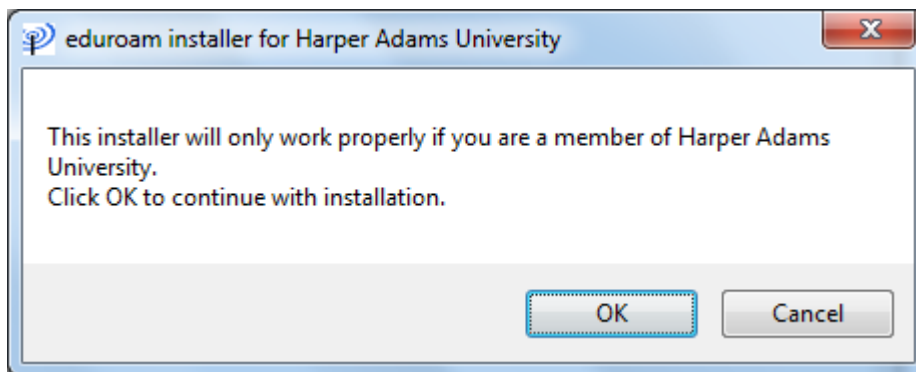


Save and run the eduroam CAT executable



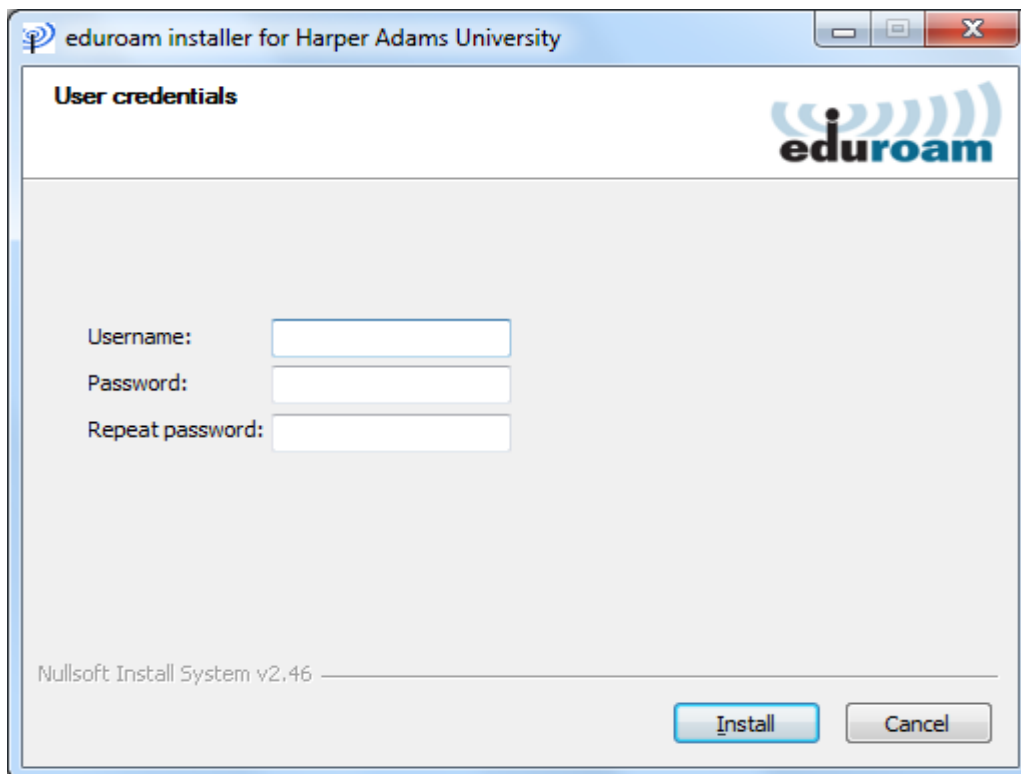
Once the eduroam CAT executable has been run an 'eduroam installer' splash screen will be displayed.

Click 'Next'.



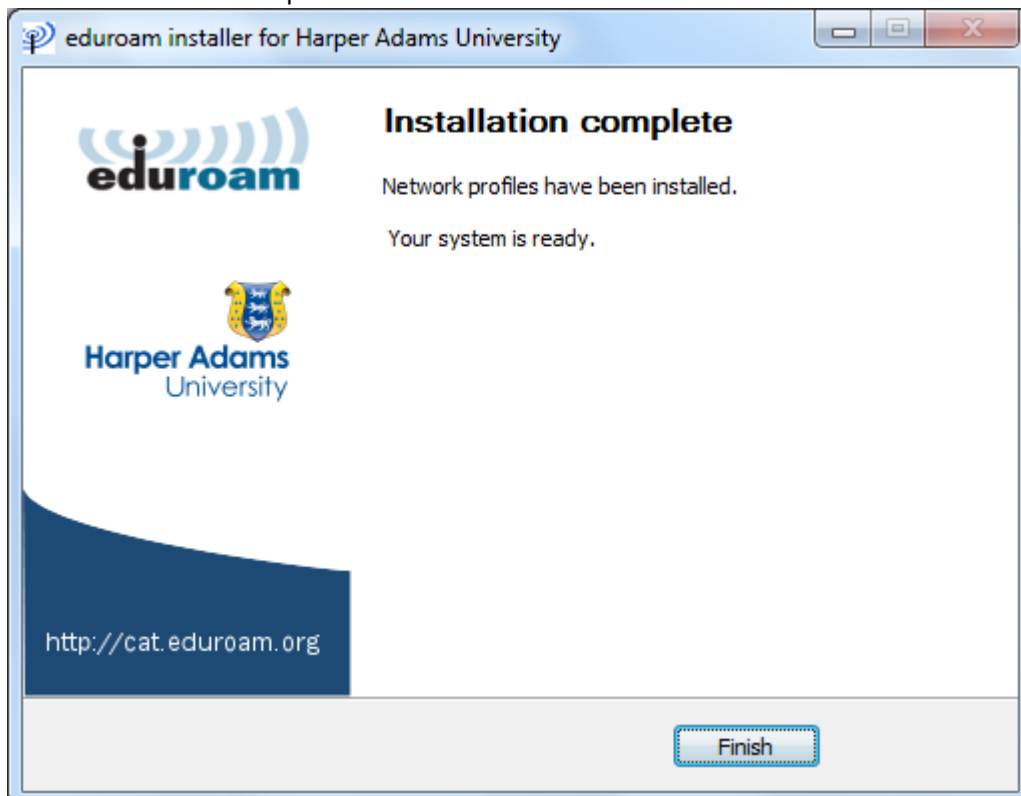
A message will be displayed notifying that the installer 'will only work properly if you are a member of Harper Adams University'

Click 'Ok'.



A user credentials screen will be displayed. The username must be the users' ID number with @harper-adams.ac.uk at the end of it. Eduroam will not work without the realm at the end of the username. The password must be the users' domain password.

Click 'Install' when complete.



A notification will be displayed when the installation has been completed.



The Windows client will automatically connect to eduroam after the installation.

Open a browser and check Internet connectivity.